

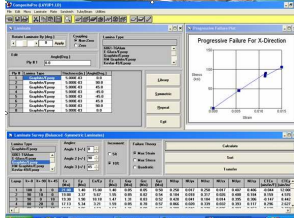
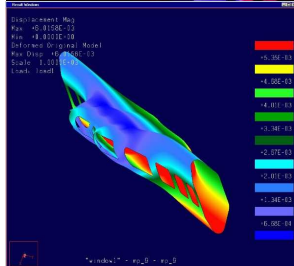
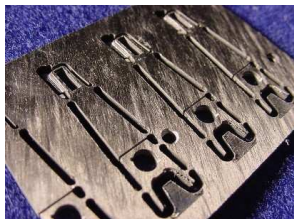
Peak Composites, Inc.

13299 W. 84th Place, Arvada CO 80005

Phone 303-973-3032 Fax 303-972-9720

dhowell@compositepro.com www.compositepro.com

Peak Composites (PCI) has been serving the composites industry since 1996 offering unique engineering solutions for your composite material and structural applications. PCI customers number in the hundreds and include Boeing, NASA, Goodrich, Easton Sports, GE, Halliburton, Johns Hopkins, Motorola, US Navy, and Walt Disney World. PCI can assist you with your engineering challenges to bring you success in the following areas:



- **Requirement Definition**— Your customer wants you to do it right the first time. Knowing the right questions to ask when defining requirements is crucial. PCI will get it right up front saving you time and money.
- **Material Identification**—Which material is right for your application: carbon, fiberglass, epoxy, etc.? The right material makes all the difference.
- **Product Development**—Over 20 years experience developing composite structures like pressure vessels, robotic arms, drive shafts, aircraft components, rocket motors, flywheels, gear boxes, cryogenic supports, military shelters, medical tables & golf shafts to name a few.
- **Structural Design**—PCI has 20 years experience in design. Designing a product to meet specs and is manufacturable avoids problems later.
- **Structural Analysis**— Both closed form, custom software creation and finite element analysis using NEi/NASTRAN insure structural integrity.
- **Process Development**—Experienced in filament winding, lay-up, autoclave, resin infusion, resin transfer molding, press lamination, bladder molding, machining, bonding, sandwich construction and more.
- **Supplier Discovery**—PCI knows the industry. We can set you up with fabricators, material and equipment suppliers for your product.
- **Troubleshooting**—Product problems? PCI can solve them.
- **Plant Setup**—Want to bring a product in-house? PCI has done it.
- **CompositePro Software**— The industry leader. A software tool to help you meet your composite design & analysis challenges. When charts and tables just aren't enough, and finite element analysis is too much, CompositePro™ fills the void with function and value.
- **Custom Software Development**—Do you do repetitive calculations and analyses? PCI can modify CompositePro or create a custom application specifically to meet your needs.
- **Training**—New to composites or not, you may have employees or customers you want to educate on the use and benefits of composites. PCI has trained hundreds of people and created training manuals, process instructions and design guides.
- **Proposal Preparation**—PCI can help you write a winning proposal. Our win ratio is an incredible 43%.
- **Market Research and Sales**—Do you want to grow your customer base? Our years of first hand engineering based sales experience really pays off.
- **Product costing**—PCI has extensive experience preparing product costing. The right cost makes you profitable and keeps your customer satisfied.

Contact PCI for your Success "Today"